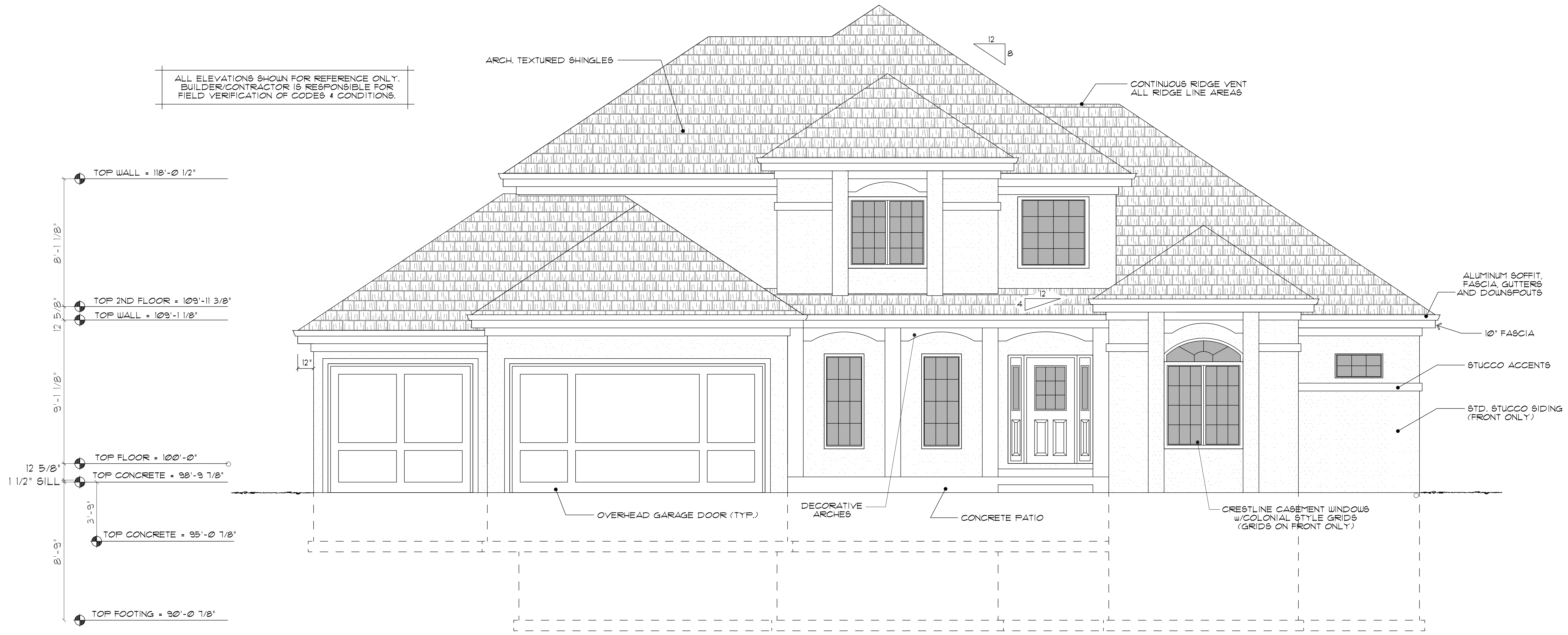


ALL ELEVATIONS SHOWN FOR REFERENCE ONLY.
 BUILDER/CONTRACTOR IS RESPONSIBLE FOR
 FIELD VERIFICATION OF CODES & CONDITIONS.



- TOP WALL = 118'-0 1/2"
- 8'-1 1/8"
- TOP 2ND FLOOR = 109'-11 3/8"
- 12 5/8"
- TOP WALL = 109'-11 1/8"
- 9'-1 1/8"
- 12 5/8"
- TOP FLOOR = 100'-0"
- 1 1/2" SILL
- TOP CONCRETE = 98'-9 7/8"
- 3'-9"
- TOP CONCRETE = 95'-0 7/8"
- 8'-9"
- TOP FOOTING = 90'-0 7/8"

ARCH. TEXTURED SHINGLES

CONTINUOUS RIDGE VENT
 ALL RIDGE LINE AREAS

ALUMINUM SOFFIT,
 FASCIA, GUTTERS
 AND DOWNSPOUTS

10' FASCIA

STUCCO ACCENTS

STD. STUCCO SIDING
 (FRONT ONLY)

OVERHEAD GARAGE DOOR (TYP.)

DECORATIVE
 ARCHES

CONCRETE PATIO

CRESTLINE CASEMENT WINDOWS
 w/COLONIAL STYLE GRIDS
 (GRIDS ON FRONT ONLY)

FRONT ELEVATION